

Muirhead®



Fine Scottish Leather

Lustrana Product specification

Part number: LA

Description: Bovine leather hides
Lustrana grade, Haircell grain

Revision: 1.0



Lustrana

Our Lustrana range is a premium leather with a bright two-tone finish and haircell grain.

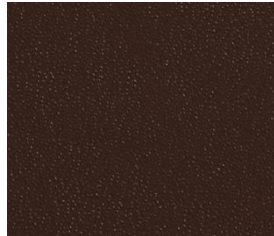
Product characteristics

Description	Test method	Unit	Minimum
Colour fastness to rubbing (wet)	BS EN ISO 11640:2018	Grey scale (ISO 105 A02)	150 cycles Min 3 grey scale
Colour fastness to rubbing (perspiration)	BS EN ISO 16640:2018	Grey scale (ISO 105 A02)	50 cycles Min 4 grey scale
Colour fastness to Rubbing (dry)	BS EN ISO 11640:2018	Grey scale (ISO 105 A02)	500 cycles Min 4 grey scale
Light fastness	BS EN ISO 105-B02:2014	Blue wool scale	Min 6
Finish adhesion (dry)	BS EN ISO 11644:2009	N/10mm	5
Finish adhesion (wet)	BS EN ISO 11644:2009	N/10mm	2
Burning behaviour	BS 5852:2006		Crib 5
	BS 5852:2006		IMO Module B certified
	ECE R118.03		Annex 6, 7, 8
Flexing endurance	BS EN ISO 5402-1:2017	Cycles	20,000
Tear strength	BS EN ISO 3377-2:2016	N	Min 35
Abrasion	BS EN ISO 17076-1:2012 (CS10/500g)	Cycles	500
Tensile	ISO 3376:2011	N/mm ²	12
Elongation	ISO 3376:2011	%	35-60
Weight		gsm	750
Hide origin			UK and Ireland
Substance	BS EN ISO 2589:2016	mm	1.0 (+/-0.2mm)
Colour	Spectro-photometer	ΔE	<1.0

Lustrana colours



Black LA002



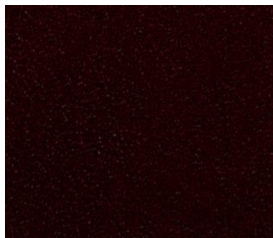
Chestnut LA004



Cinnamon LA005



Mahogany LA015



Rust LA018



Oxblood LA017



Sandstone LA113



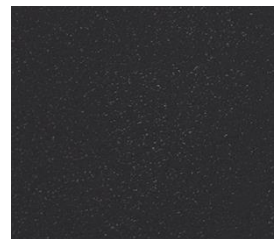
Dark green LA009



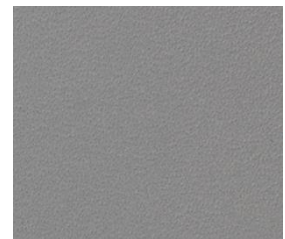
Barolo LA115



Cherry LA092



Serpentine LA114



Shale LA116

Disclaimer: The colour of our digital swatches can vary depending on individual screen settings. Therefore, please always request physical samples before placing an order.